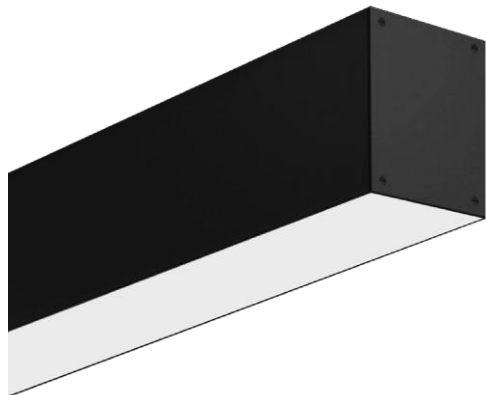


DATE:	PROJECT:	TYPE:
-------	----------	-------

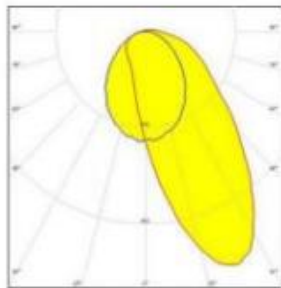


### Features

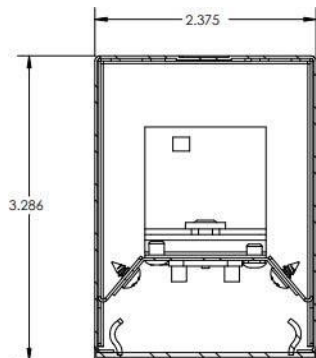
- 1167 lumens per foot.
- Finish parts are treated with a five-stage phosphate bonding process and finished with high reflectance baked enamel.
- Diffuser snaps into housing.
- Shallow depth provides sleek, low-profile appearance.
- Available in surface, suspended and recessed mount.
- Connections possible via T/L/X joiners.
- Class II/P driver, 0-10% or Triac dimming.
- Optional CCT field-selectable.
- 2 year factory warranty.



### Asymmetric Wallwash



### Dimensions



### Fixture performance

- High performance linear configured LED module boards.
- Each board consists of multiple mid-power, high efficacy LED's in a precise layout eliminating the need for supplemental heatsinking.
- The boards produce an even and diffuse light which maximizes optical efficiency.
- Compatible with the dimming performance of the LED driver.
- Color temperatures field interchangeable optional.

### LED Drivers

Universal voltage input: 120V-277V.

### Optional motion Sensor

Self-contained microwave motion sensor mount directly to luminaire.

### Installation

May be Surface mounted, wall mounted, recessed or suspended.

### LED Lumen Packages

- Custom lumen packages pre-set are optional with programmable drivers only. Contact factory for details.

### Housing

- Fabricated from code grade cold rolled steel with a white polyester finish for long lasting durability.

### Diffuser

- Extruded from frosted acrylic material.
- Linear ribbing for high LED performance.
- One-piece diffuser runs the entire luminaire length resulting in a seamless wash.
- Surge protector.

SPECIFICATIONS SUBJECT TO CHANGE, CONSULT FACTORY WHEN CRITICAL.

DATE:	PROJECT:	TYPE:
-------	----------	-------

### Ordering Code

EX: SL-WW-2.75-2-3CCT-UNV-SM-BK

SERIES	LENGTH (FT)	COLOR TEMP	VOLTAGE
SL-WW-2.75 • LED 2.75" Architectural Linear Fixture	SL-ARC-2.75 • 2   20W - 23 7/8" • 3   30W - 35 6/8" • 4   40W - 47 3/8" • 5   50W - 59 2/8" • 6   60W - 70 6/8" • 8   80W - 94 1/8"	CCT: • 30K - 3000K • 35K - 3500K • 40K - 4000K • 50K - 5000K • 3CCT tunable 30K, 35k, 40k	UNV • 120V - 120V • 277V - 277V
MOUNTING	LIGHT SOURCE	OPTIONS	
SM   Surface Mount (Plate to cover J box included)  PM   Pendant Mount  RM   Recessed Mount	BLANK • 100% Down-Light	EMERGENCY PACK • EM 120V - Emergency Pack • EM 277V - Emergency Pack  SENSORS & CONTROLS • MS - Motion Sensor Self-contained microwave motion sensor mount directly to luminaire.  JOINER • JO - Links fixtures seamless, utilizing longest runs (Sold separately).  Lit Corners • SL-ARC-2.75-T - T shape lit connector • SL-ARC-2.75-L - L shape lit connector • SL-ARC-2.75-X - X shape lit connector	
FINISH			
WH   White  BK   Black			