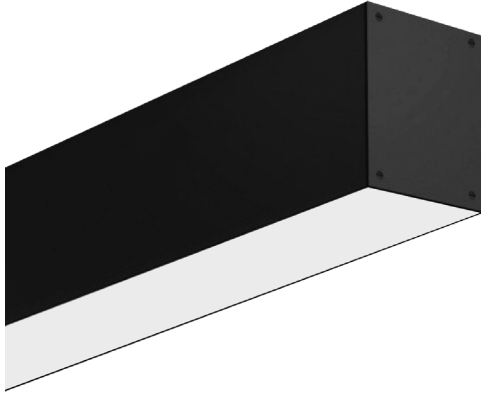


DATE:	PROJECT:	TYPE:
-------	----------	-------

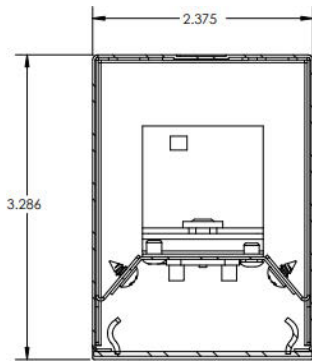


### Features

- 1167 lumens per foot.
- Wattage selectable up to 115 lumen per watt.
- Finish parts are treated with a five-stage phosphate bonding process and finished with high reflectance baked enamel.
- Diffuser snaps into housing.
- Shallow depth provides sleek, low-profile appearance.
- Available in surface, suspended, wall and recessed mount.
- Connections possible via T/L/X joiners.
- Class II /P driver, 0-10% or Triac dimming.
- Optional CCT field-selectable.
- 2 year factory warranty.



### Dimensions



### Fixture performance

- High performance linear configured LED module boards.
- Each board consists of multiple mid-power, high efficacy LED's in a precise layout eliminating the need for supplemental heatsinking.
- The boards produce an even and diffuse light which maximizes optical efficiency.
- Compatible with the dimming performance of the LED driver.
- Color temperatures are field interchangeable.

### LED Drivers

Universal voltage input: 120V-277V.

### Optional motion Sensor

Self-contained microwave motion sensor mount directly to luminaire.

### Installation

May be Surface mounted, wall mounted, recessed or suspended.

### LED Lumen Packages

- Custom lumen packages pre-set are optional with programmable drivers only. Contact factory for details.

### Housing

- Fabricated from code grade cold rolled steel with a white polyester finish for long lasting durability.

### Diffuser

- Extruded from frosted acrylic material.
- Linear ribbing for high LED performance.
- One-piece diffuser runs the entire luminaire length.
- Surge protector.

SPECIFICATIONS SUBJECT TO CHANGE, CONSULT FACTORY WHEN CRITICAL.

DATE:	PROJECT:	TYPE:
-------	----------	-------

### Ordering Code

EX: SL-ARC-2.75-2-3CCT-UNV-SM-BK

<p><b>SERIES</b></p> <p>SL-ARC-2.75</p> <ul style="list-style-type: none"> <li>LED 2.75" Architectural Linear Fixture</li> </ul>	<p><b>LENGTH (FT)</b></p> <p>SL-ARC-2.75</p> <ul style="list-style-type: none"> <li>2   20W - 23 7/8"</li> <li>3   30W - 35 6/8"</li> <li>4   40W - 47 3/8"</li> <li>5   50W - 59 2/8"</li> <li>6   60W - 70 6/8"</li> <li>8   80W - 94 1/8"</li> </ul> <p>WATTAGE SELECTABLE</p> <ul style="list-style-type: none"> <li>ws   5W, 7.5W, 10W, 12.5W</li> </ul> <p>115 lumens per watt</p>	<p><b>COLOR TEMP</b></p> <p>CCT:</p> <ul style="list-style-type: none"> <li>30K - 3000K</li> <li>35K - 3500K</li> <li>40K - 4000K</li> <li>50K - 5000K</li> <li>3CCT tunable 30K, 35k, 40k</li> </ul>	<p><b>VOLTAGE</b></p> <p>UNV</p> <ul style="list-style-type: none"> <li>120V - 120V</li> <li>277V - 277V</li> </ul>
<p><b>MOUNTING</b></p> <p>SM   Surface Mount (Plate to cover J box included)</p> <p>PM   Pendant Mount</p> <p>WM   Wall Mount</p> <p>RM   Recessed Mount</p> <p>RM   Recessed Mount Trimmed</p> <p>RR   Recessed Mount (Trimless)</p>	<p><b>LIGHT SOURCE</b></p> <p>BLANK</p> <ul style="list-style-type: none"> <li>100% Down-Light</li> </ul> <p>UP</p> <ul style="list-style-type: none"> <li>100%</li> <li>Up-Light</li> </ul> <p>75-25%</p> <ul style="list-style-type: none"> <li>75% Up</li> <li>25% Down</li> </ul> <p>25-75%</p> <ul style="list-style-type: none"> <li>25% Up</li> <li>75% Down</li> </ul>	<p><b>OPTIONS</b></p> <p>EMERGENCY PACK</p> <ul style="list-style-type: none"> <li>EM 120V - Emergency Pack</li> <li>EM 277V - Emergency Pack</li> </ul> <p>SENSORS &amp; CONTROLS</p> <ul style="list-style-type: none"> <li>MS - Motion Sensor</li> </ul> <p>Self-contained microwave motion sensor mount directly to luminaire.</p> <p>JOINER</p> <ul style="list-style-type: none"> <li>JO - Links fixtures seamless, utilizing longest runs (Sold separately).</li> </ul>	
<p><b>FINISH</b></p> <p>WH   White</p> <p>BK   Black</p>		<p>Lit Corners</p> <ul style="list-style-type: none"> <li>SL-ARC-2.75-T - T shape lit connector</li> <li>SL-ARC-2.75-L - L shape lit connector</li> <li>SL-ARC-2.75-X - X shape lit connector</li> </ul>	

SPECIFICATIONS SUBJECT TO CHANGE, CONSULT FACTORY WHEN CRITICAL.